



Iowa Ag News – Cattle on Feed

Upper Midwest Region - Iowa Field Office · 210 Walnut Street Ste 833 · Des Moines IA 50309 · (515) 284-4340 · (800) 772-0825
fax (855) 271-9802 · www.nass.usda.gov

Cooperating with the Iowa Department of Agriculture and Land Stewardship

May 16, 2014

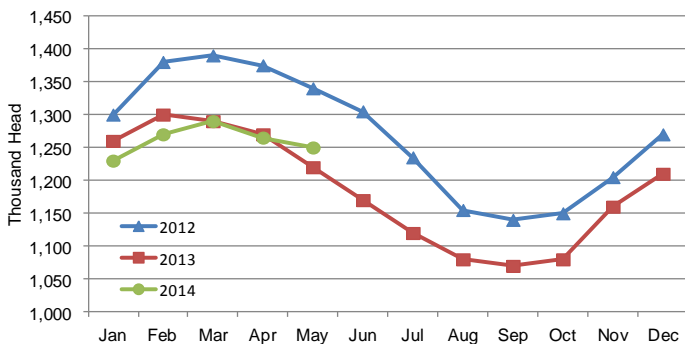
Media Contact: Greg Thessen

Cattle and calves on feed for slaughter market in Iowa for all feedlots totaled 1,250,000 on May 1, 2014 according to the USDA, National Agricultural Statistics Service, Iowa Field Office. The inventory is down 1 percent from April 1, 2014 but up 2 percent from last year. Feedlots with a capacity greater than 1,000 head had 660,000 head on feed, down 1 percent from last month but up 6 percent from last year. Feedlots with a capacity less than 1,000 head had 590,000 head on feed, down 1 percent from last month and down 2 percent from last year.

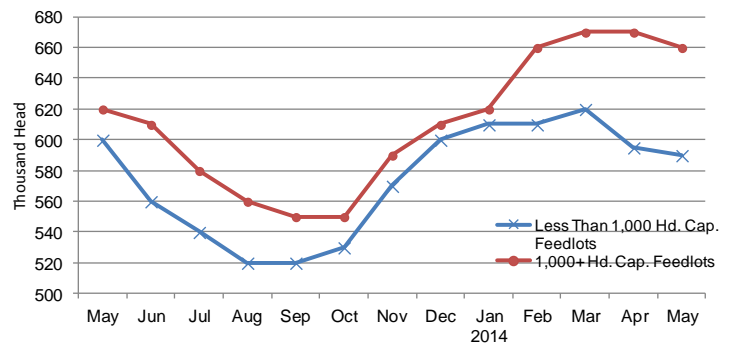
Placements during April totaled 131,000 head, an increase of 8 percent from last month and up 1 percent from last year. Feedlots with a capacity greater than 1,000 head placed 69,000 head, down 3 percent from last month and down 22 percent from last year. Feedlots with a capacity less than 1,000 head placed 62,000 head. This is up 24 percent from last month and up 51 percent from last year.

Marketings for April were 141,000 head, unchanged from last month but down 19 percent from last year. Feedlots with a capacity greater than 1,000 head marketed 76,000 head, up 10 percent from last month but down 22 percent from last year. Feedlots with a capacity less than 1,000 head marketed 65,000 head, down 10 percent from last month and down 17 percent from last year. **Other disappearance** totaled 5,000 head.

Cattle on Feed, Inventory on all Feedlots, Iowa: 2012-2014



Cattle on Feed, Inventory by Feedlot Capacity, Iowa: Current Month & Past 12 Months



All Cattle on Feed, Iowa

Item	Lots 1,000+ Head	Lots Less than 1,000 Head	All Lots
	(1,000 Head)	(1,000 Head)	(1,000 Head)
Cattle on Feed, April 1, 2014	670	595	1,265
April Placements	69	62	131
April Marketings	76	65	141
April Other Disappearance	3	2	5
Cattle on Feed, May 1, 2014	660	590	1,250

Cattle on Feed: Number on Feed, Placements, Marketings, and Other Disappearance by Month, 1,000+ Capacity Feedlots

[Cattle and calves on feed are animals for slaughter market being fed a ration of grain or other concentrates and are expected to produce a carcass that will grade select or better.]

State	Cattle on Feed May 1			Placements during April			Marketings during April			April Disappearance other than Slaughter ¹		
	2013	2014	'14 as % of '13	2013	2014	'14 as % of '13	2013	2014	'14 as % of '13	2013	2014	'14 as % of '13
	(1,000 Head)	(1,000 Head)	(Percent)	(1,000 Head)	(1,000 Head)	(Percent)	(1,000 Head)	(1,000 Head)	(Percent)	(1,000 Head)	(1,000 Head)	(Percent)
Arizona	275	277	101	26	26	100	28	25	89	1	1	100
California	495	450	91	62	57	92	49	67	137	3	15	500
Colorado	960	960	100	140	130	93	150	130	87	10	10	100
Idaho	210	215	102	33	32	97	36	26	72	2	1	50
Iowa	620	660	106	89	69	78	97	76	78	2	3	150
Kansas	2,070	2,010	97	335	325	97	350	385	110	15	20	133
Minnesota	130	138	106	16	16	100	18	13	72	1	1	100
Nebraska	2,400	2,490	104	440	420	95	460	415	90	10	15	150
Oklahoma	295	255	86	51	43	84	60	62	103	1	1	100
South Dakota ..	225	235	104	26	28	108	30	30	100	1	3	300
Texas	2,540	2,430	96	435	420	97	460	480	104	15	10	67
Washington	220	208	95	26	35	135	35	36	103	4	1	25
Other States	320	320	100	41	35	85	42	33	79	4	2	50
United States	10,760	10,648	99	1,720	1,636	95	1,815	1,778	98	69	83	120

¹Includes death loss, movement from feedlots to pasture, and shipments to other feedlots for further feeding.

United States Cattle on Feed

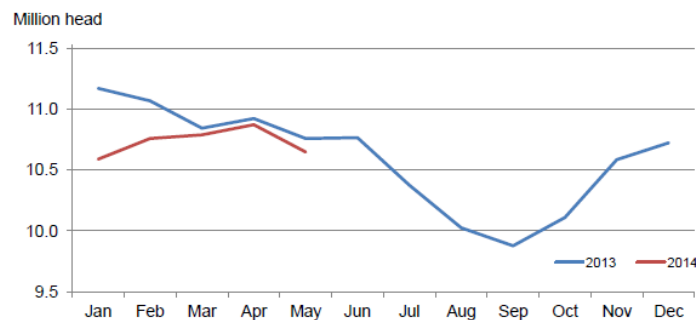
Cattle and calves on feed for slaughter market in the United States for feedlots with capacity of 1,000 or more head totaled 10.6 million head on May 1, 2014. The inventory was 1 percent below May 1, 2013.

Placements in feedlots during April totaled 1.64 million, 5 percent below 2013. Net placements were 1.55 million head. During April, placements of cattle and calves weighing less than 600 pounds were 385,000, 600-699 pounds were 255,000, 700-799 pounds were 396,000, and 800 pounds and greater were 600,000.

Marketings of fed cattle during April totaled 1.78 million, 2 percent below 2013. Marketings for April are the lowest for the month since the series began in 1996.

Other disappearance totaled 83,000 during April, 20 percent above 2013.

Cattle on Feed Inventory on 1,000+ Capacity Feedlots – United States



The complete report can be found under **Publications** on the USDA NASS website at www.nass.usda.gov.